

MAY[®]
CONTOUR HINGE™
MONOPOSTO® CARRIERS
BIPOSTO CARRIERS™
& ACOUSTIC EQ™



SNARE CARRIER

MAY® MONOPOSTO® & BIPOSTO CONTOUR HINGE™ CARRIERS

GREATER INSTRUMENT STABILITY PLUS COMPLETE FREEDOM AND MANEUVERABILITY

Contour Hinge Carriers offer the best sizing, flexibility and ergonomic design. By using hinge technology, these carriers become one with the player and remain secure and durable enough to be used through the daily rigors of marching field drills. The

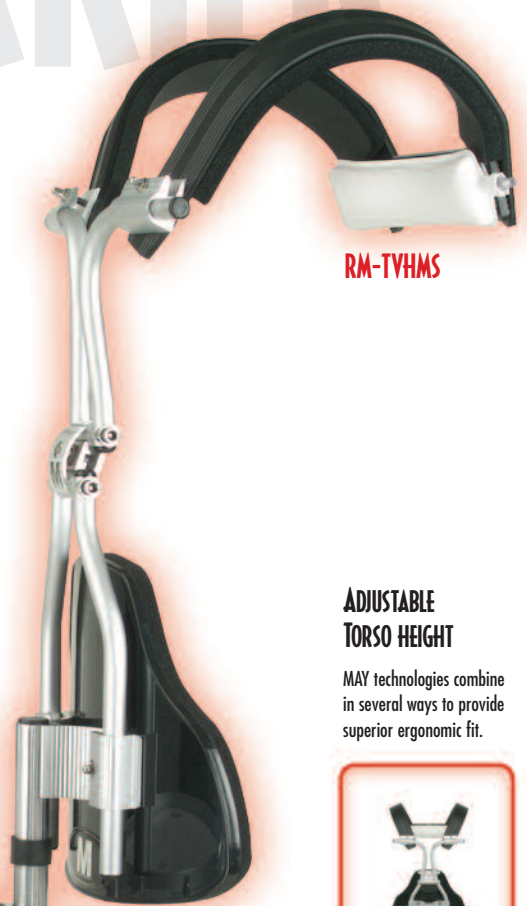
SAY GOODBYE TO J-RODS!

MAY Monoposto and Biposto Carriers incorporate j-rod free technology that gives drummers complete freedom of movement, allowing elaborate maneuvers that are essential to contemporary band performances. In addition, with their mounting posts and drop and lock features, consistent with Stadium Hardware, MAY Monoposto and Biposto Carriers provide stability and easy adjustment on the fly. They also deliver a limitless range of playing positions for all drummers, regardless of their height or drum size.

The key to superior comfort is better fit, and better fit depends on adjustability. MAY



FREEDOM TO MOVE



RM-TVHMS

ADJUSTABLE TORSO HEIGHT

MAY Technologies combine in several ways to provide superior ergonomic fit.



INVERTED PLATE

The abdomen plate on all Monoposto and Biposto carriers can be reversed for a customized fit.



Bag sold separately.

FOLDED CARRIER

All MAY Monoposto and Biposto carriers can be folded to about half their original size for easy transport and protection.



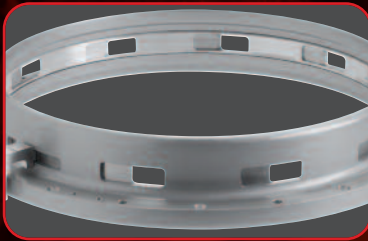
Hear the MAY Acoustic EQ in action with these drum corps and various university bands.

MAY® ACOUSTIC EQ™

ELEVATES THE MARCHING SNARE DRUM BEYOND CONTEMPORARY MARCHING PERCUSSION.

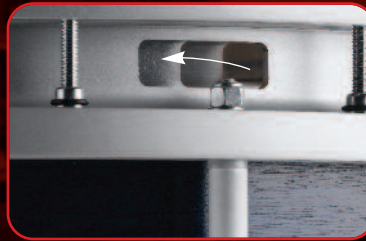
SFZ or MTS snare drums to be instantly vented to increase their dynamic range, timbre and volume for composition and performance. Add Acoustic EQ to your current drums to upgrade your sound immediately with minimal investment. With symmetrical venting, your drumline will hear better and play cleaner.

This unique system allows Yamaha 14"



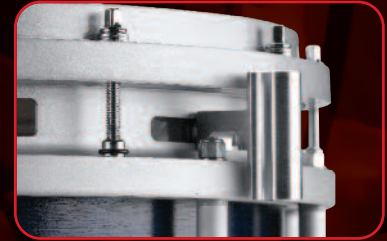
ACOUSTIC EQ

Transforms a standard SFZ or MTS snare into a drum with a multitude of options for sound enhancements. Model RM-AEQ-14



ACOUSTIC EQ VENTS

Precise vent location allows maximum airflow and greater change in the drum's timbre. The instantly adjustable vent system is located in the metal crown to ensure the durability of the SFZ or MTS drum.



ACOUSTIC EQ HANDLE

One motion easily switches between an enhanced or classic SFZ/MTS sound.



TOM CARRIER

6 POINT MAY COMFORT ZONE™

Shoulder Camber
Shoulder Width
Torso Contour

Shoulder Caster
Backbar Width
Torso Height

MAGNESIUM SHOULDERS

These ultra lightweight shoulders are padded, which provides long lasting comfort.

MAY SHOULDER CONTOUR ADJUSTMENT SYSTEM™

Fully adjustable shoulders and patented back bar supports allow changes in shoulder width, camber and caster for ultimate positioning.

RM-TVHBP

ADJUSTABLE BACK BAR WITH MAY COMFORT AIR SYSTEM™

The adjustable, inflatable back bar can be tailored to ensure a tight fit between the front and the back of the shoulders. This gives the carrier unparalleled control of the drum and provides exceptional player comfort, no matter how the carrier is worn or adjusted.

MAY CONTOUR HINGE™

With one drum key bolt you can adjust and lock multiple pivot points.

MAY TUBULAR TECHNOLOGY™

Flexible and lightweight structure retains the unrivaled strength that all May Tubular Technology™ is known for.

POLYCARBONATE ABDOMEN PLATE

This ultra light material is incredibly strong and equally durable. The MAY Abdomen Plate is virtually free floating; it bears no weight from the drum.

MONOPOSTO® / BIPOSTO BRIDGE™

Complete freedom of movement. Transfers all the shear and torque load only to the tubes, away from the abdomen plate, improving rigidity and stability to the instrument.

BIPOSTO HARDWARE™

Allows for infinite height adjustment.

QUICK DROP & LOCK SYSTEM

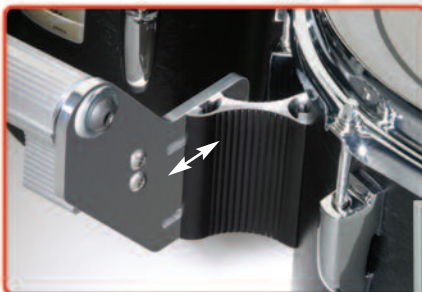
Integrates MAY Stadium Hardware™ technology.

SWIVEL ARM ADAPTERS

This fixture allows the 10/12/13/14 drum array to retrofit to your existing Bipostrail. The Variable Distance Positioning System encourages further flexibility with distance ranging to and away from the player.

Wide

Standard



FOLDED CARRIER

The MAY Biposto carrier folds to about half its full size for easy carrying.



6/8 TENOR ATTACHMENT

This feature allows for the 6/8 sextet configuration providing a wider range in options for the player. Another unique distinction allows the 6/8 drums to be raised or lowered independently from their encompassing drums.

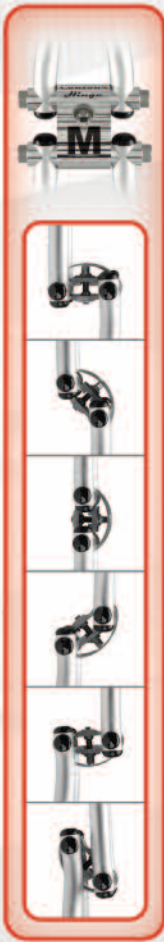


FREEDOM TO MOVE

RM-TVHBPT

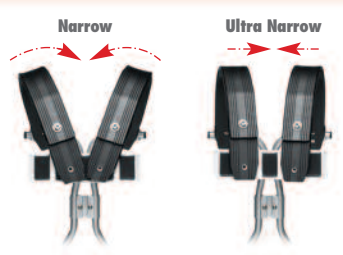
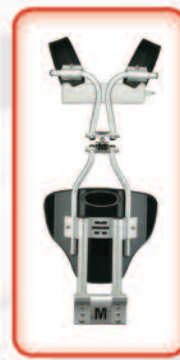
CONTOUR HINGE™

Two pivot points are designed to outline both the upper and lower body of the player. You can adjust and lock multiple pivot points.



INVERTED PLATE

The Biposto carrier's abdomen plate can be flipped to accommodate the player's body.



MAY ADJUSTABLE BACKBAR SYSTEM™

The shoulder harnesses on all MAY carriers can be adjusted left and right, as well as twisted, to comfortably fit the performer's body.

BASS CARRIER



RM-TVHMBPC

MAY® MONOPOSTO® BASS CARRIER

A NEW APPROACH

The MAY Monoposto bass drum carrier, with its single mounting post and lock nut adjustment hooks, provides stability and flexibility. The lock nut adjustment hooks create solid unity between the drum and the carrier, which eliminates any drum movement. The carrier also possesses an extreme range of playing positions—which are easy to adjust on the fly—regardless of the player's height or the drum's size.



COMFORT AIR SYSTEM™

The adjustable, inflatable back bar can be quickly and easily pumped up to give a tight yet totally comfortable fit.

INVERTIBLE SUPPORT PAD

Complements any size bass drum and allows instantaneous adjustment and positioning of drum without any assistance.



INVERTED PLATE

In addition to reversing the direction of the plate, the tube is independently adjustable into the Monoposto bridge for a customized fit.



MAY Tubular Vests, Contour Hinge Monoposto and Biposto Carriers are covered under the various U.S. patents including but not restricted to: 6,323,407; 6,329,583 B1; 5,691,492; 6,028,257; 6,172,290 B1; 6,881,886 B2; 6,403,869; 7,071,401; 6,770,805; 6,403,869 B2; and 7,166,790; plus other U.S. and foreign patents pending. MAY Stadium Hardware is covered under U.S. patent 5,072,910 and European patent EP0461838 plus other U.S. and foreign patents pending.



YAMAHA



Yamaha Corporation of America, Band & Orchestral Division, 6600 Orangethorpe Avenue • Buena Park, CA 90620
www.yamahapercussion.com • For more information, email us at: percussionquestions@yamaha.com
©2008 Yamaha Corporation of America. All rights reserved. Specifications subject to change without notice.